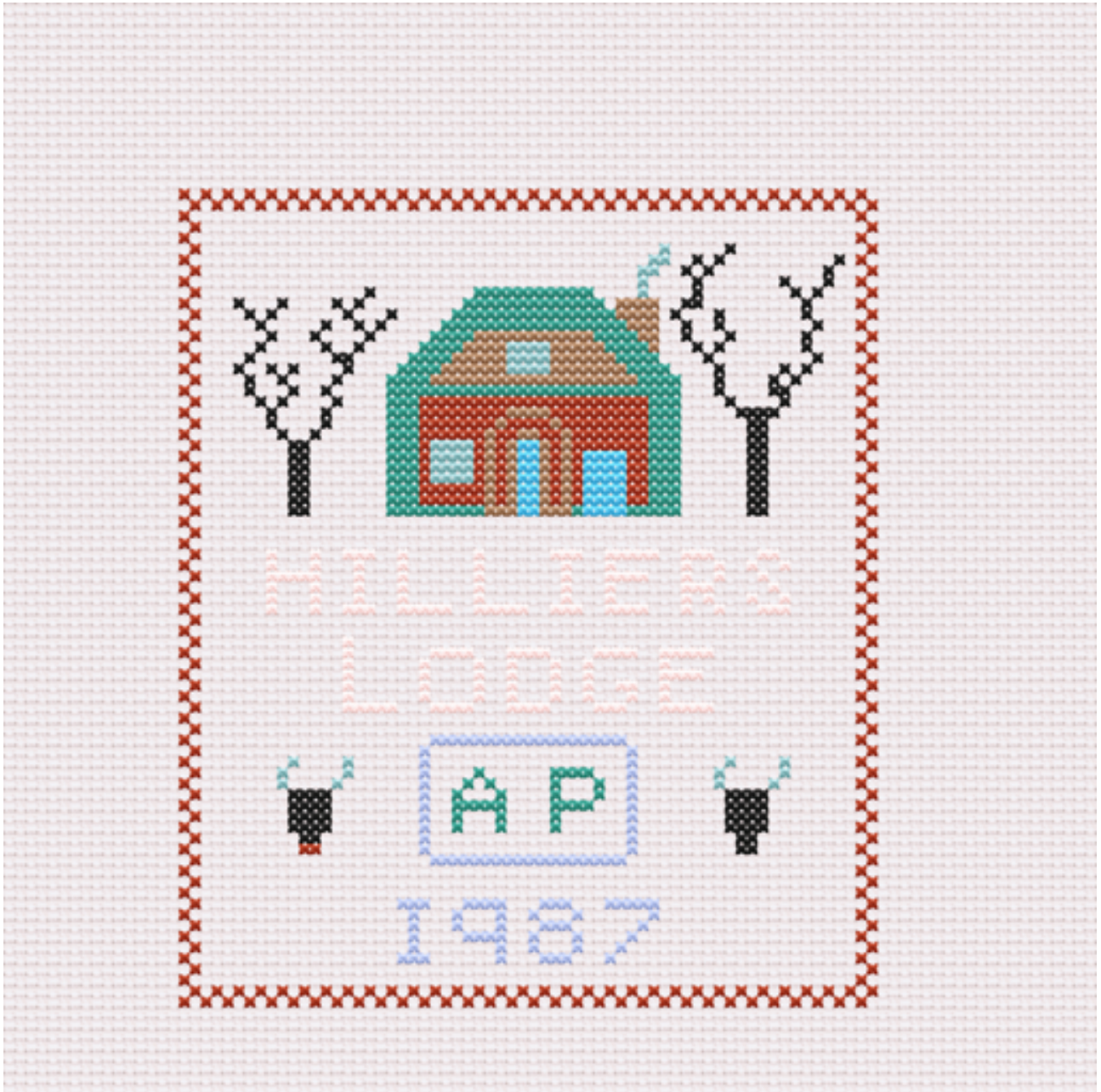


Hilliers Lodge 1987

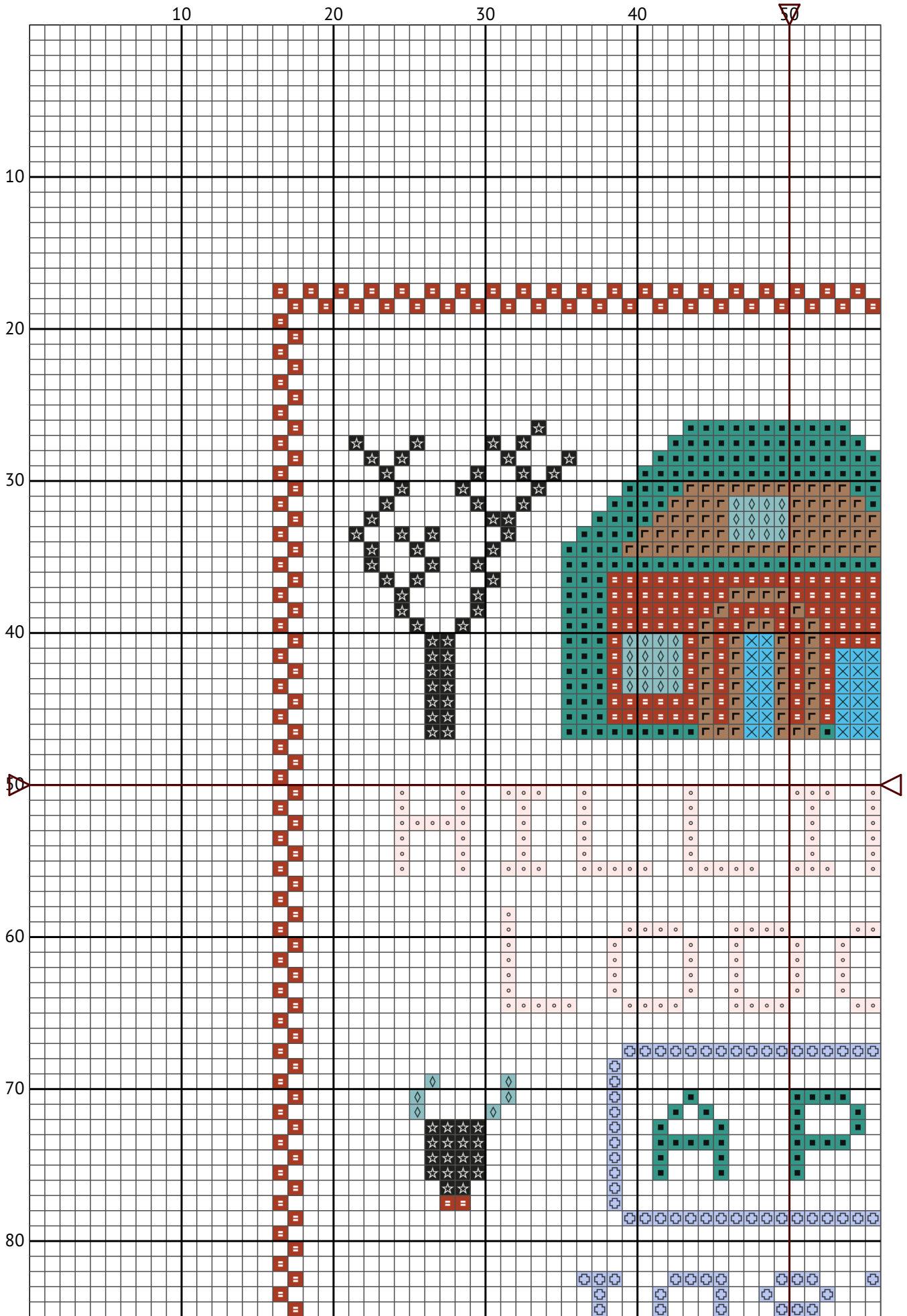
SCH24/15/3/1-4



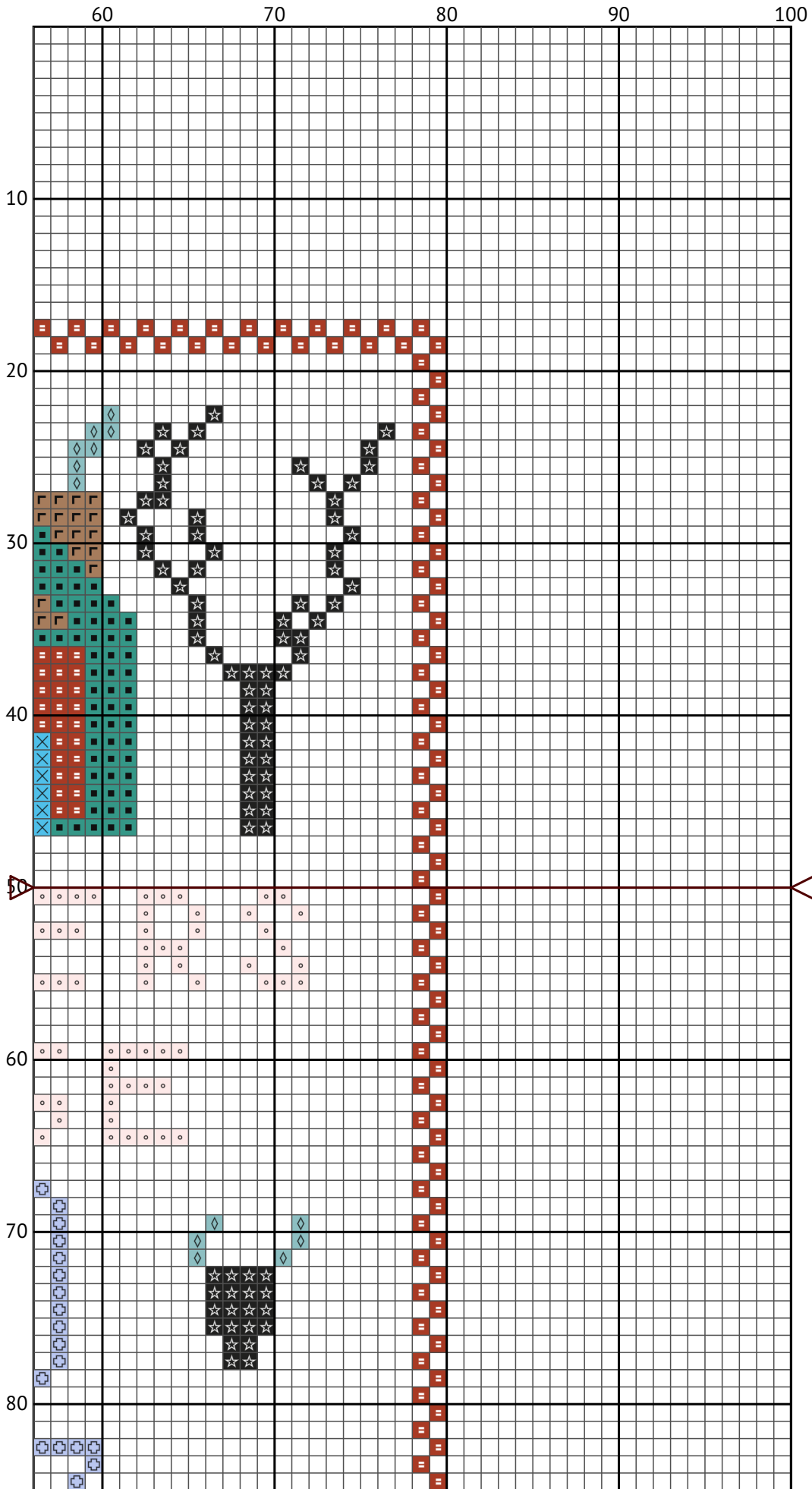
Design size: 100 x 100 stitches

Reproduction made from SCH24/15/3/1-4.

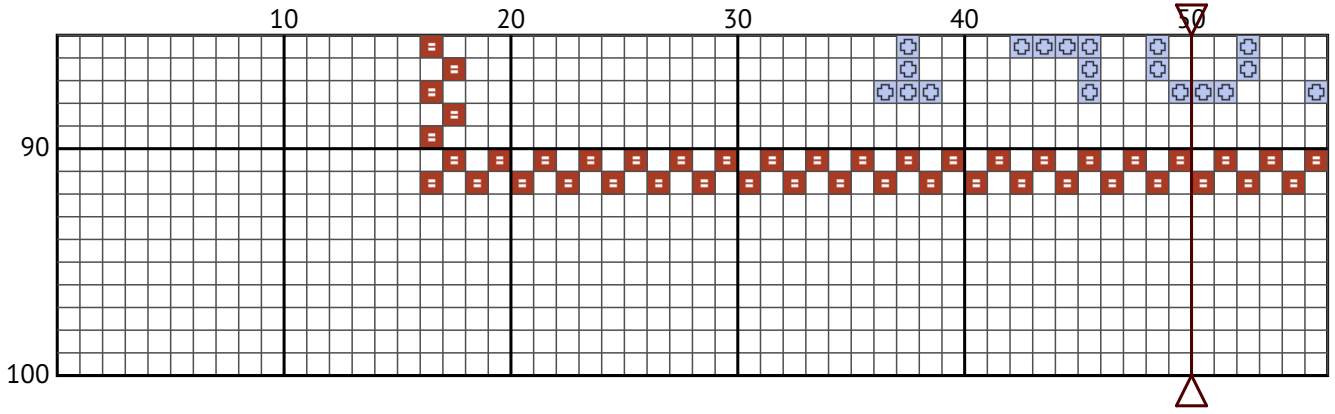
Hilliers Lodge



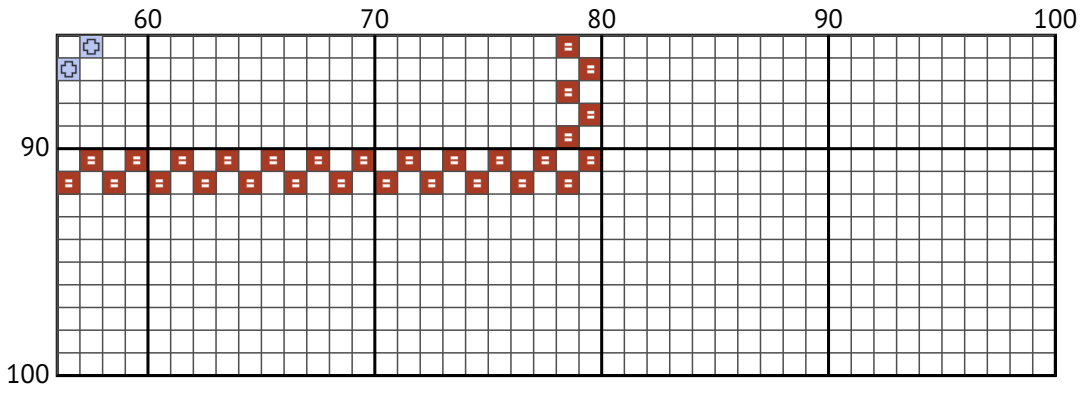
Hilliers Lodge



Hilliers Lodge


















Hilliers Lodge



Hilliers Lodge
Floss list for crosses

Use 2 strands of thread for cross stitch

N	Symbol	Number	Name	Stitches
1		 DMC 225	Shell Pink - Ultra Very Light	170
2		 DMC 310	Black	156
3		 DMC 341	Blue Violet - Light	105
4		 DMC 598	Turquoise - Light	47
5		 DMC 919	Red Copper	400
6		 DMC 3812	Seagreen - Very Dark	226
7		 DMC 3846	Bright Turquoise - Light	38
8		 DMC 3863	Mocha Beige - Medium	117